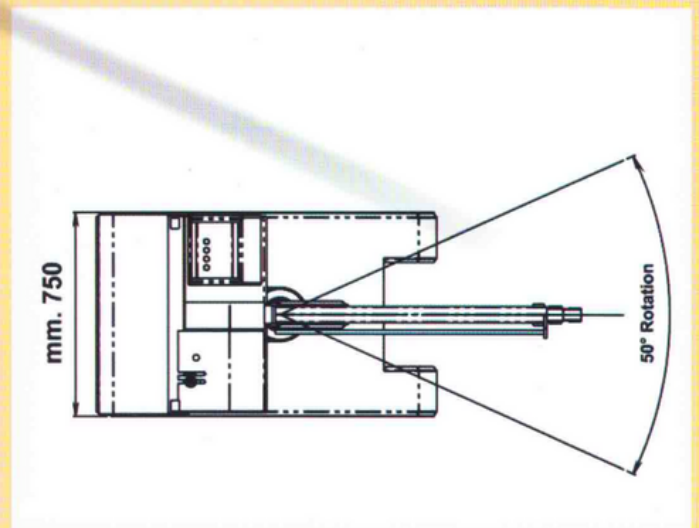
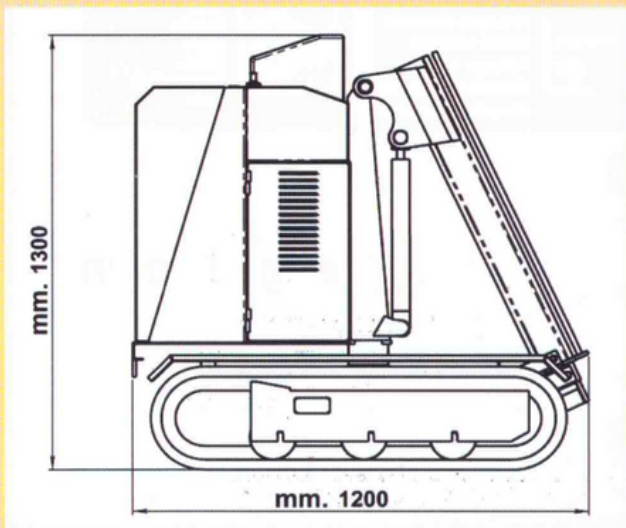




Picolino 50

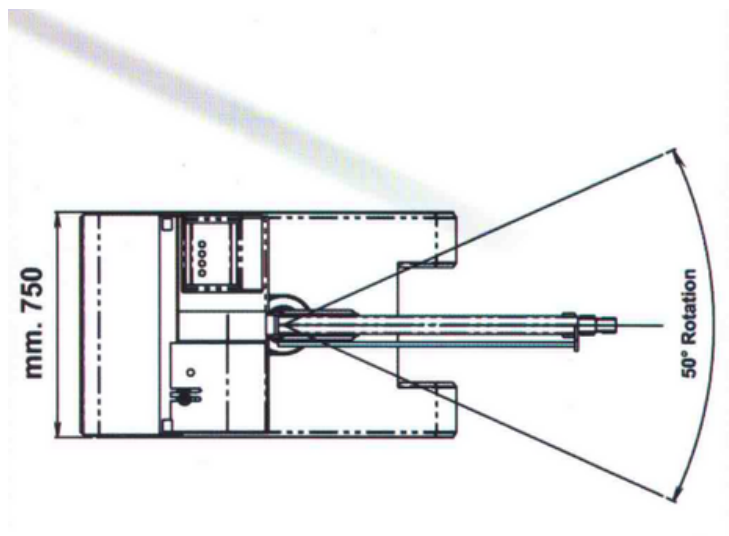
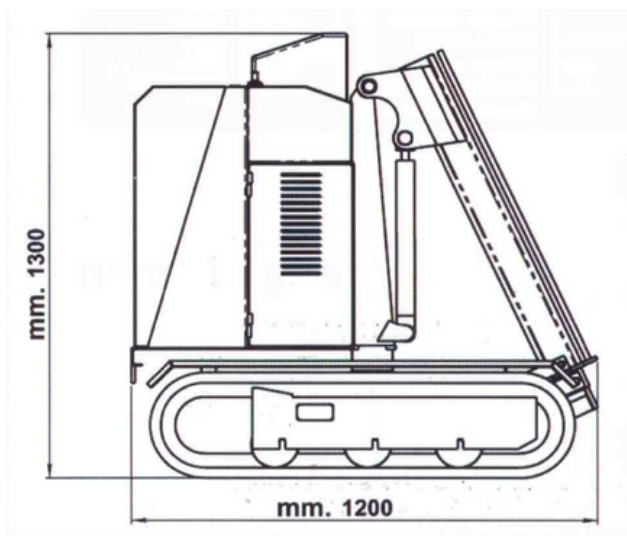
Compacto e eficaz em remoções cap. Max 200 kg em locais confinados e difícil acesso.





Picolino 50

Dimensões



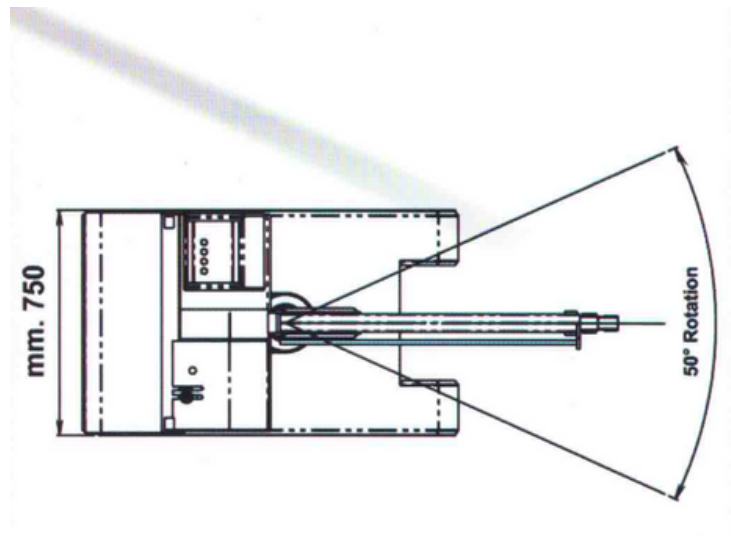
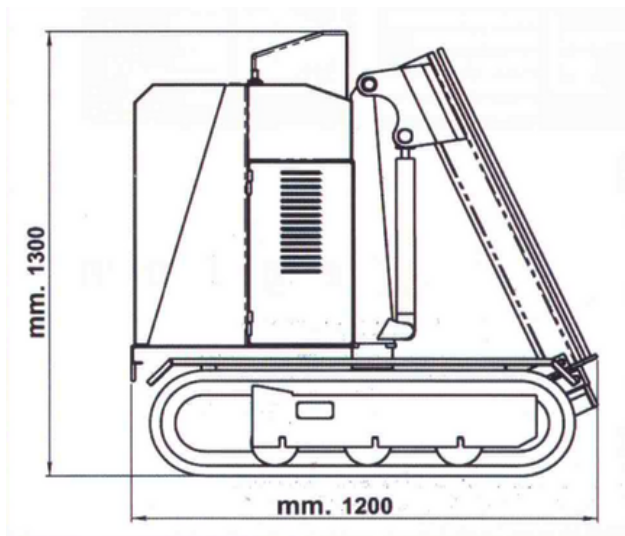
Visão Elétrica

Motor	24V - 4500W 2100rpm
Baterias	24V - 375Ah
Motor	Honda GX270 - 9HP a 3500 rpm
Tração Hidrostática	Km/h 2
Ângulo de rampa	20 graus
Carga máxima	500 Kg
Alcance lateral max.	2,47m
Altura maxima de trabalho	3,50m
Rotação guindaste	50°
dimensões guindaste	mm 1200 X 750 X 1300h
Peso	850 Kg



Picolino 50

Dimensões



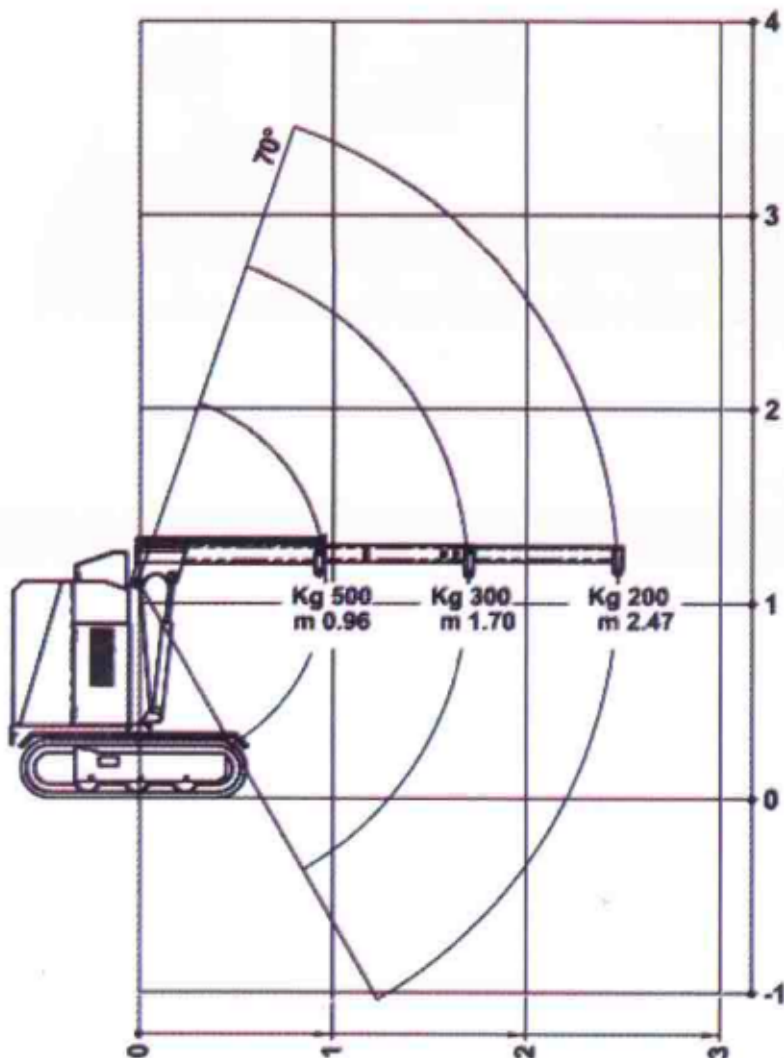
Dados técnicos

Motor	24V - 4500W 2100rpm
Baterias	24V - 375Ah
Motor	Honda GX270 - 9HP a 3500 rpm
Tração Hidrostática	Km/h 2
Ângulo de rampa	20 graus
Carga máxima	500 Kg
Alcance lateral max.	2,47m
Altura máxima de trabalho	3,50m
Rotação guindaste	50°
dimensões guindaste	mm 1200 X 750 X 1300h
Peso	850 Kg

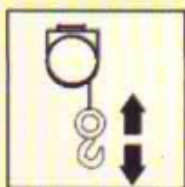


Picolino 50

Tabela de carga



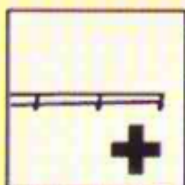
Opcionais



Guincho
Verricello
Winch
Treuril
Seilwinde
Cabrestante



Rádio controle remoto
Radiocomando
Radio remote control
Radiocommande
Funkfernsteuerung
Radiomando



Extensões manuais
Prolunghe meccaniche
Manual extensions
Rallonges manuelles
Manuelle verlängerung
Alargadores mecânicos



Cesta
Cestello
Basket
Nacelle
Personenkorb
Cesta